

Fantasia No. 2

GEORGE JEFFREYS
Edited by Jonathan Wainwright

GEORGE JEFFREYS

III &
Virginal

7



13

Example 13 is a single staff in bass clef. The melody consists of eighth and quarter notes, with a final half note.

[illegible]

25

30

36

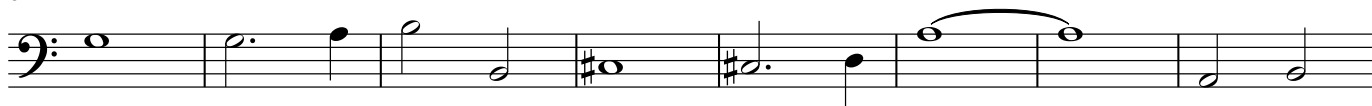
Measure 36 in the bass clef. The melody begins with a half note G2, followed by a quarter note A2, a quarter note B2, and a quarter note C3. A slur covers the next four notes: D3, E3, F3, and G3. This is followed by a half note A2, a quarter note B2, and a quarter note C3. The measure concludes with a half note D3.

[illegible][illegible]

53



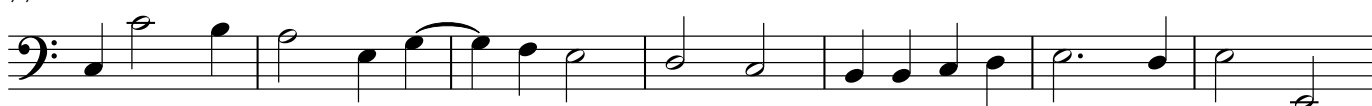
61



69



77



84



91



97

